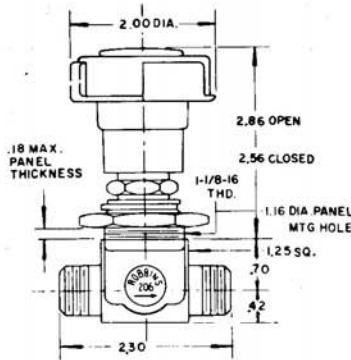
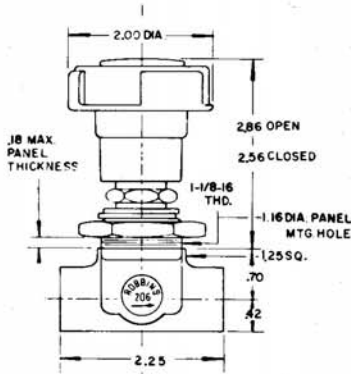


INFORMATION FOR ORDERING, IDENTIFICATION, INSPECTION AND MAINTENANCE

### Manual Controlled Shutoff Valve With Chemically Inert Stem Seal



Dimensions are  $\pm .06$

When used for vacuum, vacuum should be drawn in direction of arrow.

- Gaseous or liquid service
- High vacuum — 3500 PSI
- Ideal for Use with Exotic Gases and Most Acids
- Substantially reduces maintenance costs
- Completely eliminates loss of fluid medium
- Non-rotating stem
- Bonnet Lock Spring for added safety
- Quickly mounted in any position — universal mounting bracket supplied

### TECHNICAL DATA

	Valve
Oper. Pressure:	High Vac.—3500 PSI
Safety Factor:	4:1
Oper. Temperature:	-65°F to +250°F
Ports:	See Table
Orifice Diameter:	0.187"
Cv	0.48
Leakage:	—
Oper. Time:	—
Body Material:	Stainless Steel
Sealing Material:	Teflon
Operating torque:	14 in. lbs. at 2000 PSI
Handle turns to open:	6 approx.
Weight:	1.25 lbs. max.

Current Manufacturers' Net Price List Available Upon Request

### ORDERING INFORMATION

Model Numbers	Body Mtl.	Ports
<b>MANUAL VALVE</b>		
206G-T01-2L2L	303 SS	1/4" NPT, Male
206G-T01-2P2P	303 SS	1/4" NPT, Fem.
206G-T05-4T4T	316 SS	MS 33649-4
206G-T01-3L3L	303 SS	3/8" NPT, Male

**AIR ACTUATED VALVE** - SEE DATA SHEET D/S 14.110 D

# MAINTENANCE & ASSEMBLY

## MAINTENANCE

Lubricate Handle-Bonnet threads regularly using Ideal 600 or similar lubricant.

## OVERHAUL

After extended service, valve may be disassembled for inspection and replacement of worn parts. Use Ideal 600 or similar lubricant for Handle-Bonnet threads. Use an inert oil (such as Halocarbon 10-25 or Krytox 143AC) for light lubrication of all other parts indicated. Valve can be completely disassembled without removal from the line.

## Disassembly

1. Open valve fully and remove Lock Spring (U).
2. Unscrew and remove Bonnet Assembly (A). (If replacing Bonnet Assembly as a unit, clean valve body thoroughly and insert new Bonnet Assembly, tightening to 200 inch pounds torque. Replace Lock Spring and disregard remaining instructions.)
3. Remove Plug (B) from Handle (E). Remove Nut (C) with 7/16" socket wrench, using 1/8" Allen wrench through notch in Washer (D) and in Handle to keep Stem from rotating. Remove Washer.
4. Unscrew Handle from Bonnet (H); remove Handle Thrust Washer (F). While holding Bonnet by wrench hex, push top (threaded end) of Stem (S) against a hard flat surface to remove tapered Handle Stop (G).
5. Pull stem assembly from Bonnet; remove Bearing (J) from Bonnet.
6. Remove Bearing Follower (K) and Spring (L) from Stem. Push remaining stem assembly (seat retainer end first) into Bonnet to eject Seat (T), Seat Retainer (R), Seat Retainer Seal (P), and Sleeve (M). Remove Crush Seal (N) from Sleeve.

**SPECIAL TECHNIQUES ARE REQUIRED TO SERVICE THIS VALVE SERIES. UNLESS QUALIFIED PERSONNEL AND PROPER FACILITIES ARE AVAILABLE, WE RECOMMEND RETURNING THEM TO THE FACTORY FOR SERVICING.**

## Reassembly

All parts should be thoroughly clean.

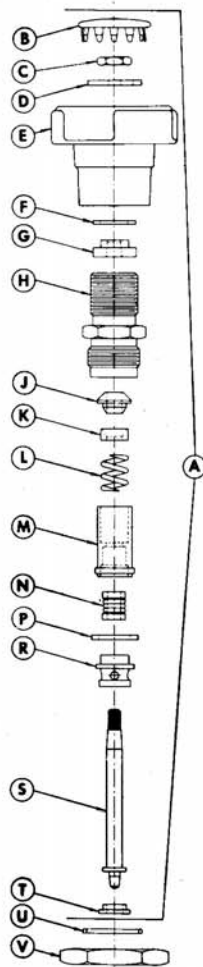
7. Hold Sleeve (M) upright with collar end up; lubricate upper cavity and insert Crush Seal (N) with convex (rounded) edges of convolutions pointing down. Lubricate lightly inside of Crush Seal. Install Seat Retainer Seal (P) on collar of Sleeve.
8. Install Seat Retainer (R) on Stem (S). Insert Stem, threaded end first, through Crush Seal, pushing Stem through so shoulder holds Seat Retainer in place against Seat Retainer Seal and Sleeve. (Bonnet may be used as a tool to aid in this operation.)
9. Install Spring (L). Bearing Follower (K) flat surface first, and Bearing (J) small diameter taper first, on Stem.
10. Lubricate bore of bonnet and install stem assembly. Install Handle Stop (G) and Handle Thrust Washer (F) on Stem.
11. Lubricate handle threads lightly and install Handle on Bonnet until Handle Thrust Washer is seated on Handle Stop.
12. Install Washer (D) and Nut (C). Insert 1/8" Allen wrench through notch in Washer and in Handle to hold Stem stationary, and tighten Nut with 7/16" socket wrench until solid metal-to-metal contact is made.
13. Holding Bonnet to prevent rotation, turn Handle counterclockwise to compress Spring and pull assembled parts into position, making sure Seat Retainer Seal is well seated.
14. Press Seat (T) firmly into Seat Retainer (R). Lubricate bonnet threads lightly and install Bonnet Assembly into Body until Seat Retainer is bottomed in position. Tighten Bonnet to 200 inch pounds torque.
15. Install Lock Spring (U). Install Plug (B) in Handle.

Model No. Part Name

10394	Plug	(B)
10393	Nut	(C)
206-13	Washer	(D)
206-7	Handle	(E)
206-14-T	Handle Thrust Washer	(F)
206-50	Handle Stop	(G)
206-2-1	Bonnet	(H)
206-16-T	Bearing	(J)
206-11-1	Follower	(K)
11007	Spring	(L)
206-9-1	Sleeve	(M)
206-15-T	Crush Seal	(N)
206-17-T	Seat Retainer Seal	(P)
206-8-1	Seat Retainer	(R)
206-3-1	Stem	(S)
206-4-T	Seat	(T)
206-25	Spring	(U)
206-5	Panel Nut	(V)

(A) Bonnet Assembly No. 206-102-1

(All functional parts, pre-assembled, sealed, and installation-ready)



## ALTA-ROBBINS

110 South 1200 West  
Lindon, Utah 84042  
Phone (801) 785-1114  
Fax (801) 785-4333

**WARRANTY:** Alta-Robbins warrants to the purchaser of its products that any part thereof which proves to be defective in material or workmanship within one year from the date of original purchase for use will be replaced free of charge. This warranty does not apply to damages resulting from accidents, alterations, misuse, or abuse.

**NOTICE:** The designs, data, and/or processes set forth hereon or in connection herewith are directly related to products of Alta-Robbins.