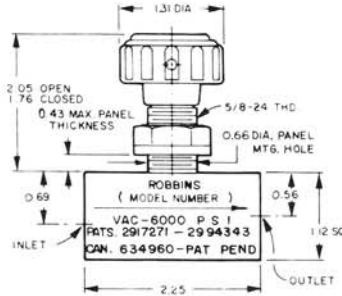


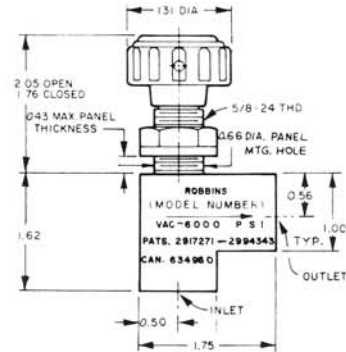
ALTA-ROBBINS

250 Series Valve Data Sheet

INFORMATION FOR ORDERING, IDENTIFICATION, INSPECTION AND MAINTENANCE



Dimensions are $\pm .03$



TECHNICAL DATA

Max Operating Pressure:	6000 PSI
Vacuum Rating:	1×10^{-5} mm Mercury
afety Factor:	4:1 per ASME Code
Cv:	Angle=0.16; Globe=0.14
Internal & External Leakage:	Zero
Orifice Diameter:	0.125 Inch
Body Material:	303 & 316 SS (Passivated) Aluminum (Anodized)
O-Ring Material:	Buna-N (Standard)
Operating Temperature:	-40°F to +250°F
Handle Turns to Open:	7 (Approximate)

ORDERING INFORMATION

To order Alta-Robbins 250 Series Valves use the following:

SSKG250-4T

Body Material	
303 Stainless Steel	- SS
Aluminum	- A
Seat Material	
Kel-F	- K
Teflon	- T
Nylon	- N
Body Style	
Globe	- G
Angle	- A
Port Connection	
MS33649	- T
MC240	- C
NPTF	- P
Aminco	- A

SEAT INFORMATION

"The Robbins Advantage"

Every valve manufactured by ALTA-ROBBINS includes a large, fully contained soft seat.

Our seats provide fine metering, zero leakage, and long service life.

Because they are fully contained, Robbins seats are very durable. Little torque is needed to close a Robbins valve bubble tight, but they are built to withstand the "over-closing" tendencies of some valve operators. Over-tightneing ceases to be a problem, even when wrenches are used on our handle!

OPTIONS

Add the following dash codes to the end of the part number above

O-Ring Material		Miscellaneous	
Viton	- 12	Seat w/metal insert	- 763
Butyl	- 91	316 SS Body	- 768
Ethylene-Propylene	- 06	316 SS Body &	
TFE Teflon®	- 11	seat w/metal insert	- 787
FEP Teflon®	- 16		
Kal-Rez®	- 08		
Buna-N for MTBE	- 59		
Buna-N for steam	- 50		
Buna-N AN6227	- 52		

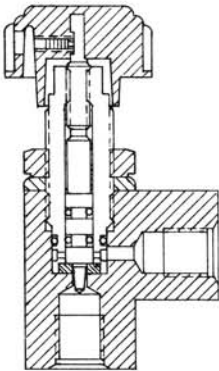
MAINTENANCE

Valve can be serviced without removal from line using standard tools.

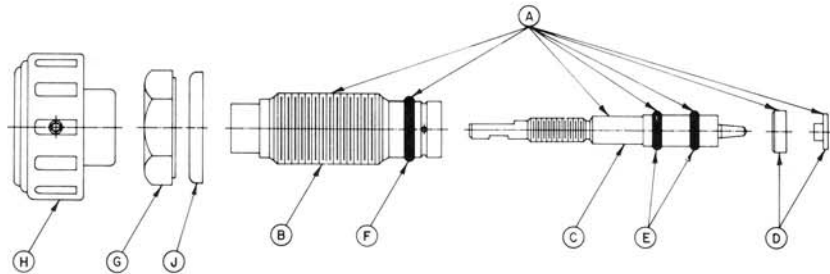
IMPORTANT: Lubricate Stem Threads and Stem O-Rings regularly with Halocarbon 25-5S or equal.

REPLACEMENT OF SEAT AND/OR O-RING SEALS

1. Open valve fully. Loosen Handle Set Screw and remove Handle, Locknut, and Washer.
2. Unscrew Bonnet and remove Bonnet O-ring.
3. Using Handle as a wrench, screw Stem out of Bonnet clockwise, thereby ejecting Seat and Stem. Remove Stem O-rings.
4. Clean all parts well with solvent. Lubricate lightly stem threads and all O-rings. Install Bonnet and Stem O-rings.
5. Screw Stem into Bonnet until engaged with Bonnet threads; use Handle to retract Stem to full limit.
6. Replace Seat in Bonnet cavity, chamfered end first, making sure it is well seated.
7. Replace bonnet Assembly in Body, torquing to 45 inch pounds for TEFLON Seats, 100 inch pounds for KEL-F seats, and 125 inch pounds for NYLON and all Metal Insert Seats.
8. Replace Washer. Replace Locknut, torquing to 100 inch pounds. Replace Handle and tighten Set Screw securely.



MANDREL No. T-221-1 IS RECOMMENDED FOR EASY INSTALLATION OF STEM O-RINGS



REPLACEMENT PARTS

DET	NAME	NUMBER
*A	Bonnet Assembly with Kel-F Seat	KA51
	Bonnet Assembly with Nylon Seat	NA51
	Bonnet Assembly with Teflon Seat	TA51
	For Metal Insert Seat, add -763 to Bonnet Assembly Number	
	<small>*Consists of all functional parts, sealed and ready to install in body</small>	
B	Bonnet	2AB
C	Stem	3B
D	Seat, Kel-F	4B-41
	Seat, Nylon	4B-21
	Seat, Teflon	4B-11
K	Seat, Kel-F with Metal Insert	A4B-41
	Seat, Nylon with Metal Insert	A4B-11
	Seat, Teflon with Metal Insert	A4B-11
E	O-Ring, Stem — Standard — 2 required Buna-N, 90 durometer ARP Size -006	5006-56
	O-Ring, Stem — Alternate — 2 required Buna-N, 70 durometer ARP Size -006	5006-51
F	O-Ring, Bonnet Buna-N, 70 durometer ARP Size -012	5012-51
G	Locknut	6AB
H	Handle with Set Screw	A48-1
—	Set Screw (#8-32x1/4 Lg Half Dog Pt)	10385-4
J	Washer	5AB
—	O-Ring Installation Mandrel	T-221-1

ALTA-ROBBINS

110 South 1200 West
Lindon, Utah 84042
Phone (801) 785-1114
Fax (801) 785-4333

WARRANTY: Alta-Robbins warrants to the purchaser of its products that any part thereof which proves to be defective in material or workmanship within one year from the date of original purchase for use will be replaced free of charge. This warranty does not apply to damages resulting from accidents, alterations, misuse, or abuse.

NOTICE: The designs, data, and/or processes set forth hereon or in connection herewith are directly related to products of Alta-Robbins.