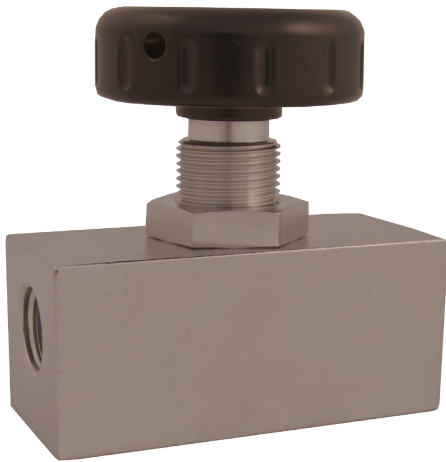
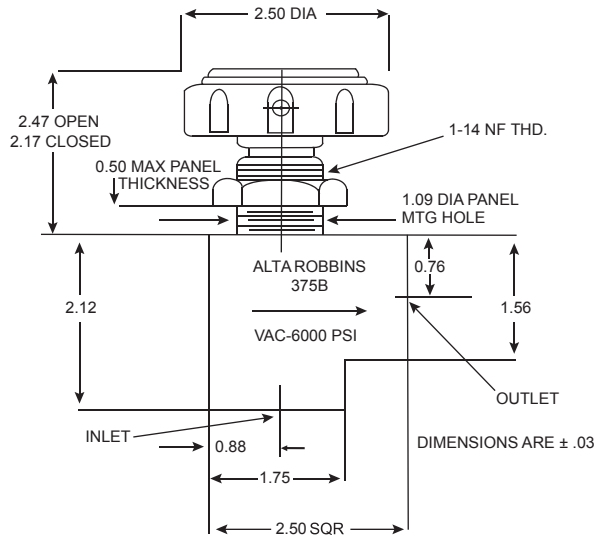
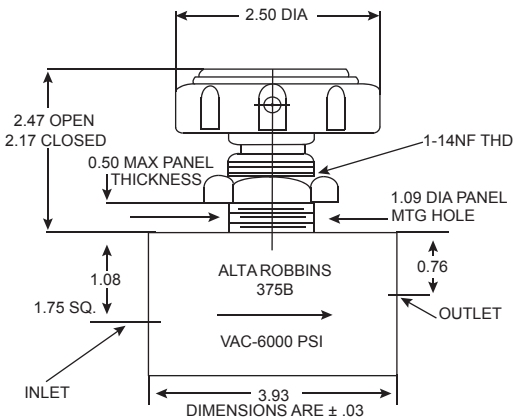


ALTA ROBBINS



- For liquid and gaseous applications requiring leakproof sealing in operation from vacuum to 6000 psi
- For applications that require large CV
- Stem threads sealed out of fluid flow for less wear and longer life
- Low operating and shutoff torque
- Low pressure drop
- 4-to-1 safety factor
- Simple to service - all functional parts can be removed for cleaning or replacement without disturbing body connections using standard tools
- Unique seat containment - Replaceable, large soft seat is fully contained in bonnet which provides fine metering control, zero leakage, and long service life
- Panel mounted in seconds without exposing functional parts



TECHNICAL DATA

MAX OPERATING PRESSURE: 6000 PSI*

VACUUM RATING: 1X10⁻⁵ mm Mercury

SAFETY FACTOR: 4:1

CV: Angle =1.30; Globe = 1.20

INTERNAL & EXTERNAL LEAKAGE: Zero

ORIFICE DIAMETER: 0.312 Inch

BODY MATERIAL:

303 SS (Passivated)

316 SS (Passivated)

O-RING MATERIAL: Buna-N (Standard)

OPERATING TEMPERATURE:

-40°F to +250°F

MAXIMUM WEIGHT: Angle=2.40 lbs,

Globe=3.75 lbs

HANDLE TURNS TO OPEN: 6 (Approximate)

**Teflon o-rings reduce the max operating pressure to 3000 psi.*

ORDERING INFO

SSKG375B-8T

SEAT MATERIAL	_____	_____
KEL-F	K	
TEFLON	T	
NYLON	N	
BODY STYLE	_____	_____
GLOBE	G	
ANGLE	A	
PORT SIZE	_____	_____
3/8"	6	
1/2"	8	
PORTS	_____	_____
MC240	C	
NPT	P	
AS5202	S	
MS33649	T	

OPTIONS

ADD THE FOLLOWING DASH CODES TO THE END OF THE PART NUMBER

O-RING MATERIAL

VITON	-12
BUTYL	-91
ETHYLENE-PROPYLENE	-06
*PTFE TEFLON	-11
KALREZ	-08
BUNA-N FOR MTBE	-59

MISCELLANEOUS

316 SS	-768
--------	------

MAINTENANCE

Valve can be serviced without removal from line using standard tools.

IMPORTANT: Lubricate Stem Threads, Stem Seal, Stem O-Rings and Wiper regularly with Halocarbon 25-5S or equal.

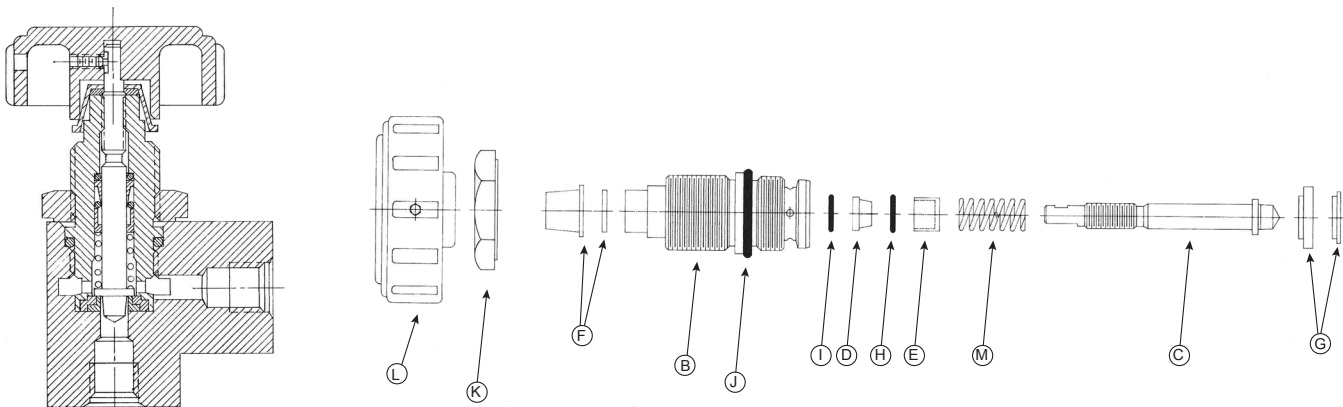
REPLACEMENT OF SEAT AND/OR O-RING SEALS

1. Open valve fully. Loosen Handle Set Screw and remove Handle and Wiper Cap Assembly.
2. Loosen Locknut and unscrew Bonnet.
3. Using Handle as a wrench, screw Stem out of Bonnet clockwise, thereby ejecting Seat and Stem. Remove Spring, Retainer, Stem Seal, and Stem O-rings.
4. Remove Bonnet O-ring
5. Clean all parts well with solvent. Lightly lubricate Stem threads, Stem Seal, Wiper, and O-Rings.
6. Place Stem O-ring (I), then Stem Seal (tapered end last), and Stem O-ring (H) in Bonnet bore.
7. Place Spring on Handle end of Stem, followed by Retainer (with small diameter hole first).
8. Install Bonnet O-ring
9. Screw Stem into Bonnet until engaged with Bonnet threads. Use Handle to retract Stem to full limit.
10. Replace Seat in Bonnet cavity, chamfered end first, making sure it is well seated.
11. Replace Bonnet Assembly in Body, torquing to 500 inch pounds for Kel-F and Nylon Seats, and 350 inch pounds for Teflon Seats.
12. Replace Locknut, torquing to 200 inch pounds.
13. Install Wiper Cap Assembly
14. Replace Handle and tighten Set Screw securely.

REPLACEMENT PARTS

NAME	PART #
B Bonnet	76
C Stem	77
D Stem Seal, Teflon	78
E Retainer	79
F Wiper & Cap Assembly	A93
G Seat, Kel-F with Metal Insert	A4CD-41
- Seat, Nylon with Metal Insert	A4CD-21
- Seat, Teflon with Metal Insert	A4CD-11
H O-Ring, Retainer - Buna-N, 70 Dur.	5011-51
Arp Size -011	
I O-Ring, Stem - Buna-N, 90 Dur.	5011-56
Arp Size -011	
J O-Ring, Bonnet - Buna-N, 70 Dur.	5212-51
Arp Size -212	
K Locknut	6CD
L Handle with Set Screw	A28-2
- Set Screw (#10-24 x 3/8" lg Half Dog Pt)	10386-4
M Spring	11002
- O-Ring Installation Mandrel	T-221-2
- Bonnet Assembly (B,C,D,E,F,G,H,I,J,M)	
- Kel-F Seat with Metal Insert	KA75
- Nylon Seat with Metal Insert	NA75
- Teflon Seat with Metal Insert	TA75
Consists of all functional parts, sealed and ready to install in valve body	
- Soft Goods Kit (D,F,G,H,I,J)	
- Kel-F Seat with Metal Insert	4007-4-1
- Nylon Seat with Metal Insert	4007-2-1
- Teflon Seat with Metal Insert	4007-1-1
- See Options section for optional o-ring part numbers.	
* Teflon o-rings reduce the max operating pressure to 3000 psi.	

Manufactured in accordance with ASME B31.3



110 SOUTH 1200 WEST, LINDON UTAH 84042 · PHONE (801) 785-1114 · FAX (801) 785-4333 · WEB ALTAROBINS.COM

WARRANTY: ALTA ROBBINS WARRANTS TO THE PURCHASER OF ITS PRODUCTS THAT ANY PART THEREOF WHICH PROVES TO BE DEFECTIVE IN MATERIAL OR WORKMANSHIP WITHIN ONE YEAR FROM THE DATE OF ORIGINAL PURCHASE FOR USE WILL BE REPLACED FREE OF CHARGE. THIS WARRANTY DOES NOT APPLY TO DAMAGES RESULTING FROM ACCIDENTS, ALTERATIONS, MISUSE, OR ABUSE.

NOTICE: THE DESIGNS, DATA, AND/OR PROCESSES SET FORTH HEREIN OR IN CONNECTION HERewith ARE DIRECTLY RELATED TO PRODUCTS OF ALTA ROBBINS.