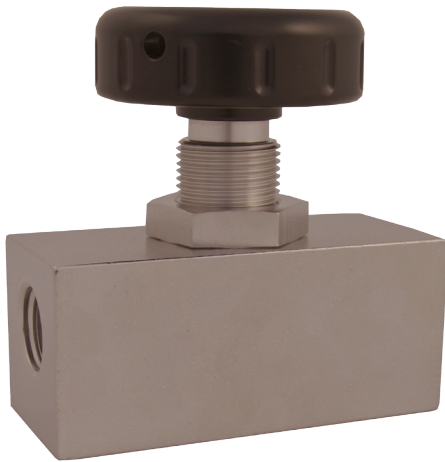
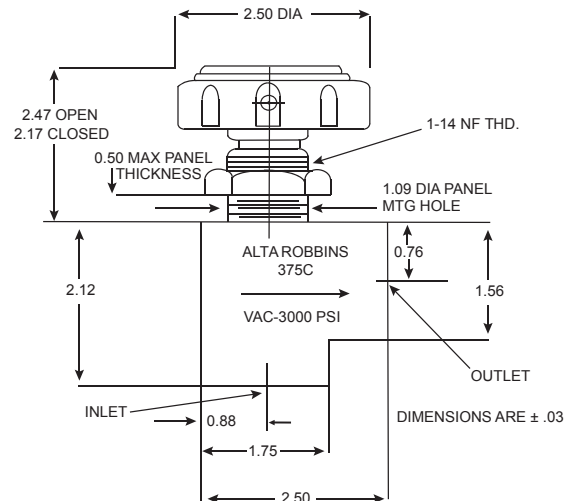
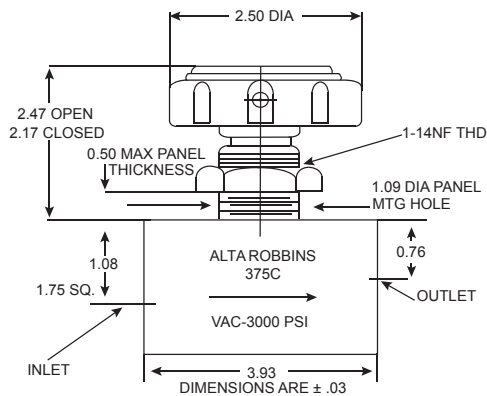


ALTA ROBBINS



- Alta Robbins 375C Valve has been specially designed for use with multiple oxides of nitrogen such as nitrogen tetroxide (N2O4) and inhibited red fuming nitric acid (IRFNA) and It is also compatible with unsymmetrical dimethyl hydrazine (UDMH) and many other acids and chemicals
- Valve seals are made of FEP Fluoro-Carbon resin (Teflon) No elastomers are used
- Valve has same mounting dimensions and is fully interchangeable with Robbins 375A-500A and 375B Series Valves
- Low operating and shutoff torque
- Stem threads sealed out of fluid flow for less wear and longer life
- Low pressure drop
- 4-to-1 safety factor
- Unique seat containment - Replaceable, large soft seat is fully contained in bonnet which provides fine metering control, zero leakage, and long service life
- Panel mounted in seconds without exposing functional parts



TECHNICAL DATA

OPERATING PRESSURE: VAC-3000 PSI

SAFETY FACTOR: 4:1

CV: Angle = 1.30; Globe = 1.20

INTERNAL & EXTERNAL LEAKAGE: Zero

ORIFICE DIAMETER: 0.312 Inch

BODY MATERIAL:
303 SS (Passivated)
316 SS (Passivated)

SEAT & SEAL MATERIAL: Teflon (FEP)

OPERATING TEMPERATURE:
-40°F to +165°F

WEIGHT: Angle=2.40 lbs, Globe=3.75 lbs

HANDLE TURNS TO OPEN: 6 (Approximate)

ORDERING INFO

SSTG375C-8T

SEAT MATERIAL	_____	}	T
TEFLON	T		
BODY STYLE	_____	}	G
GLOBE	G		
ANGLE	A		
PORT SIZE	_____	}	8
3/8"	6		
1/2"	8		
PORTS	_____	}	C
MC240	C		
NPT	P		
AS5202	S		
MS33649	T		

OPTIONS

ADD THE FOLLOWING DASH CODES TO THE END OF THE PART

MISCELLANEOUS

316 SS

-768

MAINTENANCE

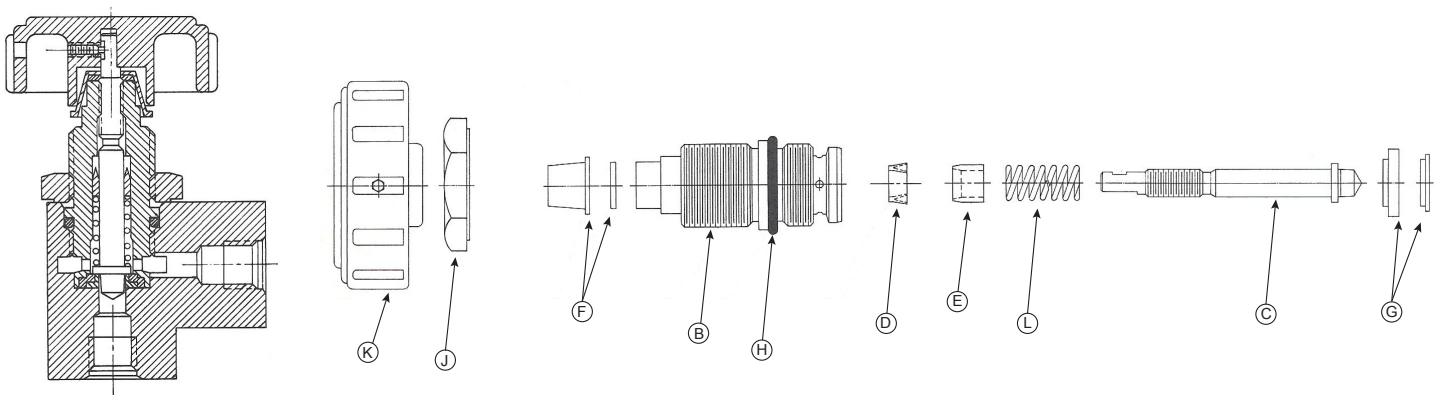
IMPORTANT: Lubricate Stem Threads and Stem O-Rings regularly with Halocarbon 25-5S or equal.

REPLACEMENT OF SEAT AND/OR O-RING SEALS

1. Open valve fully. Loosen Handle Set Screw and remove Handle and Wiper Cap Assembly.
2. Loosen Locknut and unscrew Bonnet.
3. Using Handle as a wrench, screw Stem out of Bonnet clockwise, thereby ejecting Seat and Stem. Remove Spring, Retainer, and Stem Seal.
4. Remove Bonnet O-ring
5. Clean all parts well with solvent. Lightly lubricate Stem threads, Stem Seal, Wiper, and Bonnet O-Ring.
6. Soak Bonnet and Bonnet O-ring in boiling water for 5 minutes. Pre-heat Alta Robbins Mandrel #T-221-5 and use to slide O-ring into Bonnet groove. Resoak Bonnet for 5 minutes, then cool to room temperature.
7. Place Spring, then Retainer, chamfered end last, on Stem.
8. Place Stem Seal, lips first, on lubricated shank of Alta Robbins Tool #T-279. Place tool in Bonnet bore and inject Stem Seal until bottomed. Remove tool.
9. Insert Robbins Tool #T-279A through hole in Stem Seal to expand lips so Stem threads will not interfere. Remove tool and immediately work Stem through Stem Seal with gentle rocking motion and counter-clockwise rotation until engaged with Bonnet threads. Use Handle to retract Stem to full limit.
10. Replace Seat in Bonnet cavity, chamfered end first, making sure it is well seated.
11. Replace Bonnet Assembly in Body, torquing to 350 inch pounds.
12. Replace Locknut, torquing to 200 inch pounds.
13. Install Wiper Cap Assembly
14. Replace Handle and tighten Set Screw securely.

REPLACEMENT PARTS

NAME	PART #
B Bonnet	76
C Stem	77
D Stem Seal, Teflon (FEP)	126-16
E Retainer, Teflon (FEP)	124-16
F Wiper & Cap Assembly	A93
G Seat, Teflon with Metal Insert	A4CD-16
H O-Ring, Bonnet - Teflon (FEP)	5212-16
J Locknut	6CD
K Handle with Set Screw	A28-2
- Set Screw (#10-24 x 3/8" lg Half Dog Pt)	10386-4
L Spring	11002
- O-Ring Installation Mandrel	T-221-5
- Stem Seal Installation Tool	T-279
- Stem Seal Expansion Tool	T-279A
- Bonnet Assembly (F,H,B,D,E,L,C,G)	
- Teflon Seat with Metal Insert	TA75-777
Consists of all functional parts, sealed and ready to install in valve body	
- Soft Goods Kit (F,H,D,E,G)	
- Teflon Seat with Metal Insert	4007-16-1



110 SOUTH 1200 WEST, LINDON UTAH 84042 · PHONE (801) 785-1114 · FAX (801) 785-4333 · WEB ALTAROBINS.COM

WARRANTY: ALTA ROBBINS WARRANTS TO THE PURCHASER OF ITS PRODUCTS THAT ANY PART THEREOF WHICH PROVES TO BE DEFECTIVE IN MATERIAL OR WORKMANSHIP WITHIN ONE YEAR FROM THE DATE OF ORIGINAL PURCHASE FOR USE WILL BE REPLACED FREE OF CHARGE. THIS WARRANTY DOES NOT APPLY TO DAMAGES RESULTING FROM ACCIDENTS, ALTERATIONS, MISUSE, OR ABUSE.

NOTICE: THE DESIGNS, DATA, AND/OR PROCESSES SET FORTH HEREIN OR IN CONNECTION HERewith ARE DIRECTLY RELATED TO PRODUCTS OF ALTA ROBBINS.