

ALTA-ROBBINS

375B Series Valve Data Sheet

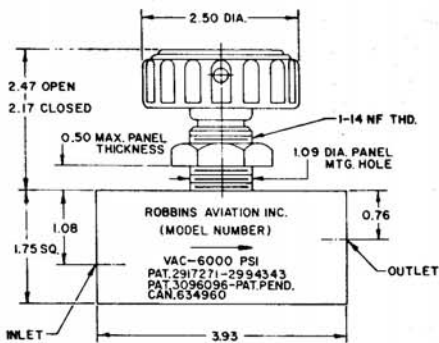
INFORMATION FOR ORDERING, IDENTIFICATION, INSPECTION AND MAINTENANCE

TECHNICAL DATA

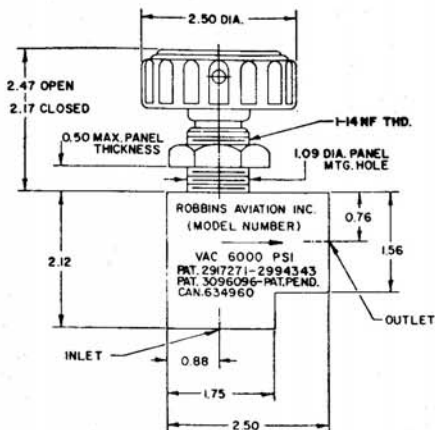


OPERATING PRESSURE:	VAC. - 6000 PSI
SAFETY FACTOR:	4:1
C_v :	ANGLE = 1.30 GLOBE = 1.20
EXTERNAL LEAKAGE:	ZERO
INTERNAL LEAKAGE:	ZERO
ORIFICE DIA:	0.312 IN.
BODY MATERIAL:	303 & 316 STAINLESS STEEL (PASSIVATED)
O-RING MATERIAL:	BUNA-N (STANDARD)
OPERATING TEMPERATURE:	-40°F. TO +250°F.
MAXIMUM WEIGHT:	ANGLE = 2.40 LBS. GLOBE = 3.75 LBS.
PORTS:	3/8" AND 1/2" FEMALE TUBE
HANDLE TURNS TO OPEN:	6 (APPROX.)

ORDERING INFORMATION



DIMENSIONS ARE ± 0.03



WHEN USED FOR VACUUM, VACUUM SHOULD BE DRAWN IN DIRECTION OF FLOW ARROW

	MODEL NUMBER	BODY MTL.	SEAT MTL.	PORTS*
G L O B E	SSKG375B-6T	303 SS	KEL-F	AND10050-6
	SSNG375B-6T	303 SS	NYLON	AND10050-6
	SSTG375B-6T	303 SS	TEFLON	AND10050-6
	SSKG375B-6C-768	316 SS	KEL-F	MC240-6
	SSNG375B-6C-768	316 SS	NYLON	MC240-6
	SSTG375B-6C-768	316 SS	TEFLON	MC240-6
	SSKA375B-8T	303 SS	KEL-F	AND10050-8
	SSNA375B-8T	303 SS	NYLON	AND10050-8
	SSTA375B-8T	303 SS	TEFLON	AND10050-8
	SSKA375B-8C-768	316 SS	KEL-F	MC240-8
SSNA375B-8C-768	316 SS	NYLON	MC240-8	
SSTA375B-8C-768	316 SS	TEFLON	MC240-8	
A N G L E	SSKA375B-6T	303 SS	KEL-F	AND10050-6
	SSNA375B-6T	303 SS	NYLON	AND10050-6
	SSTA375B-6T	303 SS	TEFLON	AND10050-6
	SSKA375B-6C-768	316 SS	KEL-F	MC240-6
	SSNA375B-6C-768	316 SS	NYLON	MC240-6
	SSTA375B-6C-768	316 SS	TEFLON	MC240-6
	SSKA375B-8T	303 SS	KEL-F	AND10050-8
	SSNA375B-8T	303 SS	NYLON	AND10050-8
	SSTA375B-8T	303 SS	TEFLON	AND10050-8
	SSKA375B-8C-768	316 SS	KEL-F	MC240-8
SSNA375B-8C-768	316 SS	NYLON	MC240-8	
SSTA375B-8C-768	316 SS	TEFLON	MC240-8	

*MATE WITH STRAIGHT THREAD FLARED TUBE FITTINGS SUCH AS PARKER "TRIPLE-LOK" F5BX SERIES

FOLLOWING SUBSTITUTE O-RINGS AND BODY MATERIAL AVAILABLE:

	ADD TO MODEL No.
VITON O-RINGS (INSTEAD OF BUNA-N)	-12
316 SS BODY** (INSTEAD OF 303 SS)	-768

**VALVES WITH MC240 PORTS ARE ONLY AVAILABLE IN 316 SS

SHOW O-RING DASH CODE BEFORE -768 CODE WHEN USED TOGETHER

CURRENT MANUFACTURERS' NET PRICE LIST AVAILABLE UPON REQUEST

VALVE CAN BE SERVICED WITHOUT REMOVAL FROM LINE USING STANDARD TOOLS.

IMPORTANT:

LUBRICATE STEM THREADS, STEM SEAL, O-RINGS, AND WIPER REGULARLY WITH AN INERT LUBRICANT. (FACTORY-ASSEMBLED VALVES ARE LUBRICATED AS FOLLOWS: STEM THREADS WITH KEL-F 90, HALOCARBON 25-5S, OR KRYTOX PR240-AC; STEM SEAL, O-RINGS, AND WIPER WITH KEL-F 10 OR HALOCARBON 10-25 OIL.)

DISASSEMBLY

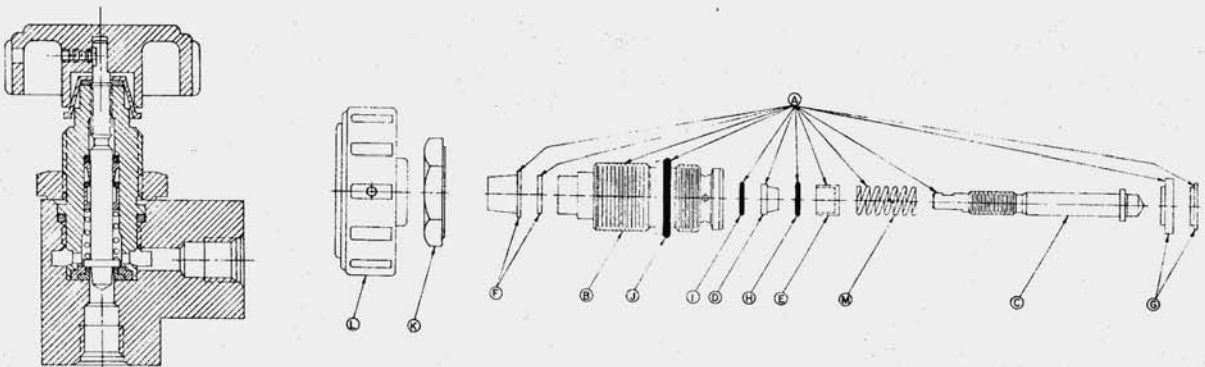
1. OPEN VALVE FULLY. LOOSEN HANDLE SET SCREW AND REMOVE HANDLE AND WIPER & CAP ASSEMBLY.
2. LOOSEN LOCKNUT AND UNSCREW BONNET.
3. USING HANDLE AS A WRENCH, SCREW STEM OUT OF BONNET CLOCKWISE; REMOVE SEAT, STEM, SPRING, RETAINER, STEM SEAL, AND O-RINGS (I & H).
4. REMOVE BONNET O-RING (J).

ASSEMBLY

1. CLEAN PARTS TO REQUIRED CLEANLINESS LEVEL.
2. LUBRICATE STEM THREADS, STEM SEAL, O-RINGS, AND WIPER WITH INERT LUBRICANTS AS SHOWN ABOVE UNDER IMPORTANT.
3. PLACE O-RING (I), THEN STEM SEAL (TAPERED END LAST) AND O-RING (H) IN BONNET BORE.
4. PLACE SPRING ON HANDLE END OF STEM, FOLLOWED BY RETAINER (WITH SMALL DIAMETER HOLE FIRST).
5. INSTALL O-RING (J) ON BONNET.
6. SCREW STEM INTO BONNET UNTIL ENGAGED WITH BONNET THREADS; USE HANDLE TO RETRACT STEM TO FULL LIMIT.
7. INSERT SEAT IN BONNET. SCREW BONNET INTO BODY, TORQUING TO 375 INCH POUNDS FOR KEL-F

DET	NAME	NUMBER
*A	BONNET ASSY w/ KEL-F METAL INSERT SEAT BONNET ASSY w/ NYLON METAL INSERT SEAT BONNET ASSY w/TEFLON METAL INSERT SEAT *CONSISTS OF ALL FUNCTIONAL PARTS, SEALED AND READY TO INSTALL IN BODY	KA75 NA75 TA75
B	BONNET	76
C	STEM	77
D	STEM SEAL, TEFLON	78
E	RETAINER	79
F	WIPER & CAP ASSEMBLY	A93
G	SEAT, KEL-F WITH METAL INSERT SEAT, NYLON WITH METAL INSERT SEAT, TEFLON WITH METAL INSERT	A4CD-41 A4CD-21 A4CD-11
H	O-RING, RETAINER - BUNA-N, <u>70 DUR.</u> ARP Size -011	5011-51
I	O-RING, STEM - BUNA-N, <u>90 DUR.</u> ARP Size -011	5011-56
J	O-RING, BONNET - BUNA-N, 70 DUR. ARP Size -212	5212-51
K	LOCKNUT	6CD
L	HANDLE WITH SET SCREW SET SCREW (10-24 x 3/8 Lg HALF Dog Pt)	A28-2 10386-4
M	SPRING	11002

- SEATS, 500 INCH POUNDS FOR NYLON SEATS, AND 350 INCH POUNDS FOR TEFLON SEATS.
8. REPLACE LOCKNUT, TORQUING TO 200 INCH POUNDS.
9. INSTALL WIPER & CAP ASSEMBLY.
10. REPLACE HANDLE AND TIGHTEN SET SCREW SECURELY.



ALTA-ROBBINS

110 South 1200 West
 Lindon, Utah 84042
 Phone (801) 785-1114
 Fax (801) 785-4333

WARRANTY: Alta-Robbins warrants to the purchaser of it's products that any part thereof which proves to be defective in material or workmanship within one year from the date of original purchase for use will be replaced free of charge. This warranty does not apply to damages resulting from accidents, alterations, misuse, or abuse.

NOTICE: The designs, data, and/or processes set forth hereon or in connection herewith are directly related to products of Alta-Robbins.