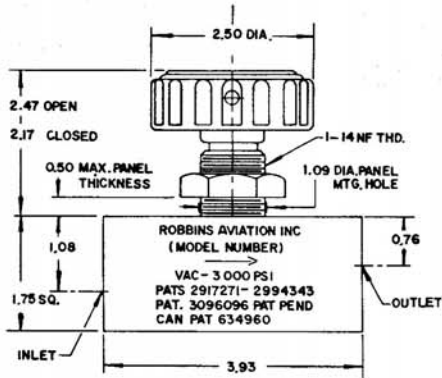


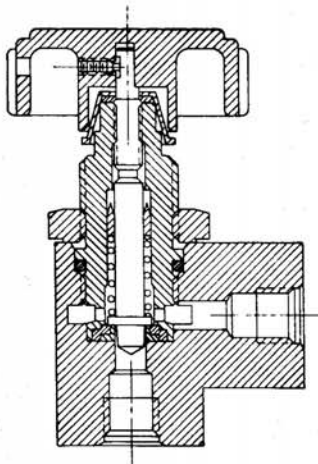
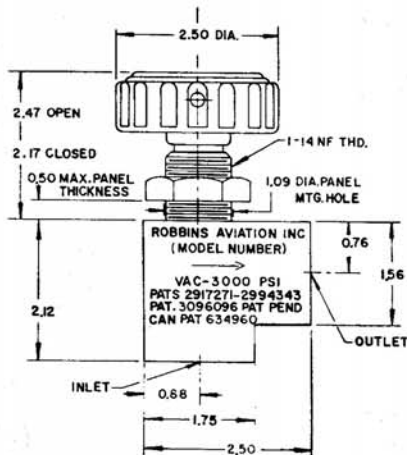
ALTA-ROBBINS

375C Series Valve Data Sheet

INFORMATION FOR ORDERING, IDENTIFICATION, INSPECTION AND MAINTENANCE



DIMENSIONS ARE $\pm .03$



ROBBINGS 375C VALVE HAS BEEN ESPECIALLY DESIGNED FOR USE WITH MULTIPLE OXIDES OF NITROGEN SUCH AS NITROGEN TETROXIDE (N_2O_4) AND INHIBITED RED FUMING NITRIC ACID (IRFNA). IT IS ALSO COMPATIBLE WITH UNSYMMETRICAL DIMETHYL HYDRAZINE (UDMH) AND MANY OTHER ACIDS AND CHEMICALS.

VALVE SEALS ARE OF DUPONT "TEFLON" FEP-FLUOROCARBON RESIN. NO ELASTOMERS ARE USED.

VALVE HAS SAME MOUNTING DIMENSIONS AND IS FULLY INTERCHANGEABLE WITH ROBBINGS 375A-500A AND 375B SERIES VALVES.

TECHNICAL DATA

MAX. OPER. PRESSURE:	3000 PSI
SAFETY FACTOR:	4:1
C_v :	ANGLE: 1.3; GLOBE: 1.2
EXTERNAL LEAKAGE:	ZERO
INTERNAL LEAKAGE:	ZERO
ORIFICE DIAMETER:	0.312 IN.
BODY MATERIAL:	303 SS (PASSIVATED)
SEAT & SEAL MATERIAL:	TEFLON (FEP)
OPERATING TEMPERATURE:	-40°F. TO +165°F.
PORTS:	3/8" & 1/2" FEMALE TUBE
MAXIMUM WEIGHT:	ANGLE: 2.40; GLOBE: 3.75
HANDLE TURNS TO OPEN:	6 (APPROXIMATE)

WHEN USED FOR VACUUM, VACUUM SHOULD BE DRAWN IN DIRECTION OF FLOW ARROW

ORDERING INFORMATION

	MODEL NUMBER	PORT CONNECTION
GLOBE	SSTG375C-6T SSTG375C-8T	AND10050-6 AND10050-8
ANGLE	SSTA375C-6T SSTA375C-8T	AND10050-6 AND10050-8
MODIFICATIONS:	FOR 316 STAINLESS STEEL BODY ADD -768 TO VALVE MODEL NUMBER	
CURRENT MANUFACTURERS' NET PRICE LIST AVAILABLE UPON REQUEST		

IMPORTANT:

LUBRICATE STEM THREADS, STEM SEAL, BONNET O-RING, AND WIPER REGULARLY WITH AN INERT LUBRICANT. (FACTORY-ASSEMBLED VALVES ARE LUBRICATED AS FOLLOWS: STEM THREADS WITH KEL-F 90, KRYTOX PR240-AC, OR HALOCARBON 25-5S; STEM SEAL, BONNET O-RING, AND WIPER WITH KEL-F 10 OIL OR HALOCARBON 10-25 OIL.)

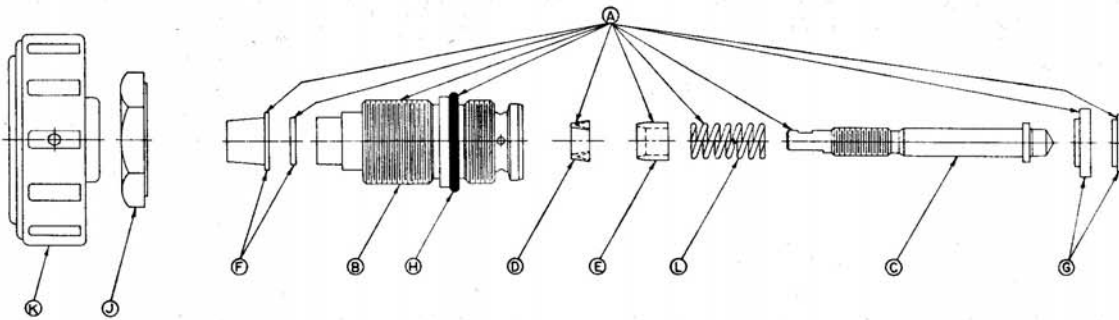
DISASSEMBLY

1. OPEN VALVE FULLY.
2. LOOSEN HANDLE SET SCREW AND REMOVE HANDLE (K) AND WIPER & CAP ASSEMBLY (F).
3. LOOSEN LOCKNUT (J) AND UNSCREW BONNET (B).
4. USING HANDLE AS A WRENCH, SCREW STEM OUT OF BONNET CLOCKWISE TO REMOVE SEAT ASSEMBLY (G), STEM (C), SPRING (L), RETAINER (E), AND STEM SEAL (D).
5. REMOVE BONNET O-RING (H).

ASSEMBLY

1. CLEAN PARTS TO REQUIRED CLEANLINESS LEVEL.
2. LUBRICATE STEM THREADS, STEM SEAL, BONNET O-RING, AND WIPER WITH INERT LUBRICANTS AS SHOWN ABOVE UNDER IMPORTANT.
3. SOAK BONNET (B) AND BONNET O-RING (H) IN BOILING WATER FOR 5 MINUTES. PRE-HEAT ROBBINS MANDREL #T-221-5 AND USE TO SLIDE O-RING INTO BONNET GROOVE. RESOAK BONNET FOR 5 MIN.; THEN COOL TO ROOM TEMPERATURE.
4. PLACE SPRING (L), THEN RETAINER (E), CHAMFERED END LAST, ON STEM (C).
5. PLACE STEM SEAL (D), LIPS FIRST, ON LUBRICATED SHANK OF ROBBINS TOOL #T-279. PLACE TOOL IN BONNET BORE AND INJECT SEAL UNTIL BOTTOMED. REMOVE TOOL.
6. INSERT ROBBINS TOOL #T-279A THROUGH HOLE IN STEM SEAL TO EXPAND LIPS SO STEM THREADS WILL NOT INTERFERE. REMOVE TOOL AND IMMEDIATELY WORK STEM THROUGH STEM SEAL WITH GENTLE ROCKING MOTION AND COUNTER-CLOCKWISE ROTATION UNTIL ENGAGED WITH BONNET THREADS. USE HANDLE TO RETRACT STEM TO FULL LIMIT.
7. INSERT SEAT (G) IN BONNET (B).
8. SCREW BONNET INTO BODY, TORQUING TO 350 INCH POUNDS.
9. TIGHTEN LOCKNUT (J) TO 200 INCH POUNDS TORQUE.
10. INSTALL WIPER & CAP ASSEMBLY (F).
11. INSTALL HANDLE (K) AND TIGHTEN SET SCREW SECURELY.

DET.	NAME	NUMBER
A*	BONNET ASSEMBLY WITH TEFLON METAL INSERT SEAT *CONSISTS OF ALL FUNCTIONAL PARTS; SEALED AND READY TO INSTALL IN VALVE BODY	TA75-777
B	BONNET	76
C	STEM	77
D	STEM SEAL, TEFLON (FEP)	126-16
E	RETAINER, TEFLON (FEP)	124-16
F	WIPER & CAP ASSEMBLY	A93
G	SEAT, TEFLON WITH METAL INSERT	A4CD-16
H	O-RING, BONNET, TEFLON (FEP)	5212-16
J	LOCKNUT	6CD
K	HANDLE WITH SET SCREW	A28-2
-	SET SCREW (10-24 3/8 HALF Dog)	10386-4
L	SPRING	11002
-	O-RING INSTALLATION MANDREL	T-221-5
-	STEM SEAL INSTALLATION TOOL	T-279
-	STEM SEAL EXPANSION TOOL	T-279A



ALTA-ROBBINS

110 South 1200 West
 Lindon, Utah 84042
 Phone (801) 785-1114
 Fax (801) 785-4333

WARRANTY: Alta-Robbins warrants to the purchaser of its products that any part thereof which proves to be defective in material or workmanship within one year from the date of original purchase for use will be replaced free of charge. This warranty does not apply to damages resulting from accidents, alterations, misuse, or abuse.

NOTICE: The designs, data, and/or processes set forth hereon or in connection herewith are directly related to products of Alta-Robbins.